

Online Rights of Way Map for East Sussex

An online Rights of Way Map showing footpaths and bridleways across the County is now available on the East Sussex County Council website. The map can be accessed by using the following link:-

<http://www.eastsussex.gov.uk/leisureandtourism/countryside/rightsofway/rightsofwaymap/intro.htm>

This map can be used to plan walks and rides on the Rights of Way network. It also provides the location of stiles, gates and bridges as well as path numbers. Each stile, gate and bridge is also given a unique identification number, which is useful to quote when reporting any issues on the network to the Rights of Way team.



What the map shows

The map covers the whole county and lets you zoom in to any area to show the footpaths, bridleways and byways in that location. You can also find out if there are any stiles, gates or bridges on the paths.

How to use the map

You can click and drag to move around the map, use the slider bar to zoom in and out, or search by place, street name or grid reference. You can also look at the rights of way on an aerial photo base, and get more information, such as path, stile, gate or bridge number, if you zoom in fully and click on a path or symbol.

Reporting Problems

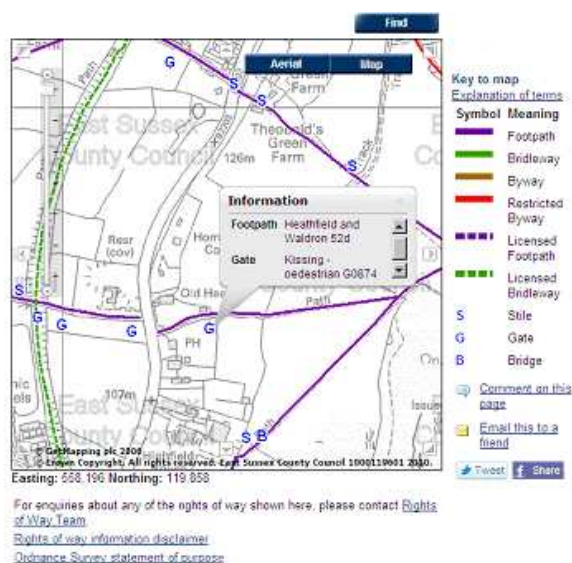
By using the online map, Parish Councils and other users can provide the Rights of Way Team with more information when reporting problems. By providing the bridge, gate or stile number if available, the Path name, or the grid reference shown at the bottom left of the map, when reporting an issue, the time taken to identify the exact location and nature of the reported problem can be substantially reduced.

Problems can be reported to:-

Rights of Way and Countryside Management team
County Hall,
St Anne's Crescent,
Lewes,
East Sussex BN7 1SG

Phone: 0345 60 80 193

Email: rightsofway@eastsussex.gov.uk



This project is part-financed by the European Union, through the Interreg IVA 2 Seas project Accessing the Countryside

Please Note: For full search functionality, you will need to use Internet Explorer version 7 or 8.